

Welcome to Taking Space Without Apology

A WOMEN + GIRLS
LEADERSHIP CAFÉ

POPP MARTIN
STUDENT UNION
OCTOBER 16, 2023
9 A.M. - 1 P.M.



WOMEN + GIRLS RESEARCH
ALLIANCE

womengirlsalliance.charlotte.edu



wi-ce.net



@WGRACharlotte

#LeadershipCafe



Agenda

Welcome

Dr. Michelle Meggs

Executive Director

Women + Girls Research Alliance

Greetings & Opening Remarks:

Dr. Catrine Tudor-Locke

Dean

College of Health and Human Services

Sponsor Welcome:

Rhonda Caldwell

President

Women's Inter-cultural Exchange, Inc.

What is a Leadership Café?

Tara P. Hammonds, Esq. MSW

Program Director

Women's Inter-cultural Exchange, Inc.

Let's Get Started!

Ohavia Philips, MS

Media Mogul and Host

The Oh Show, LLC

9:00

9:30

Round 1

10:00

Break

10:10

Round 2

10:40

Break

10:50

Round 3

11:20

Break

11:30

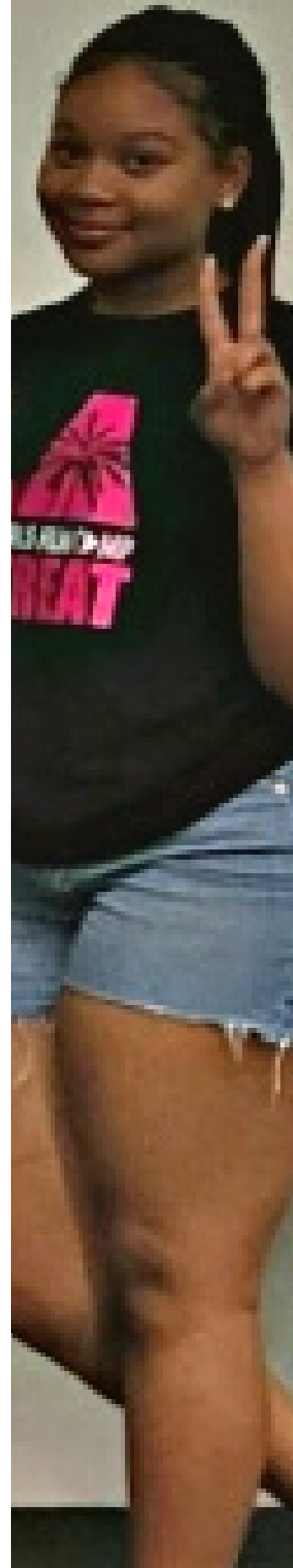
Fun Activity

12:00

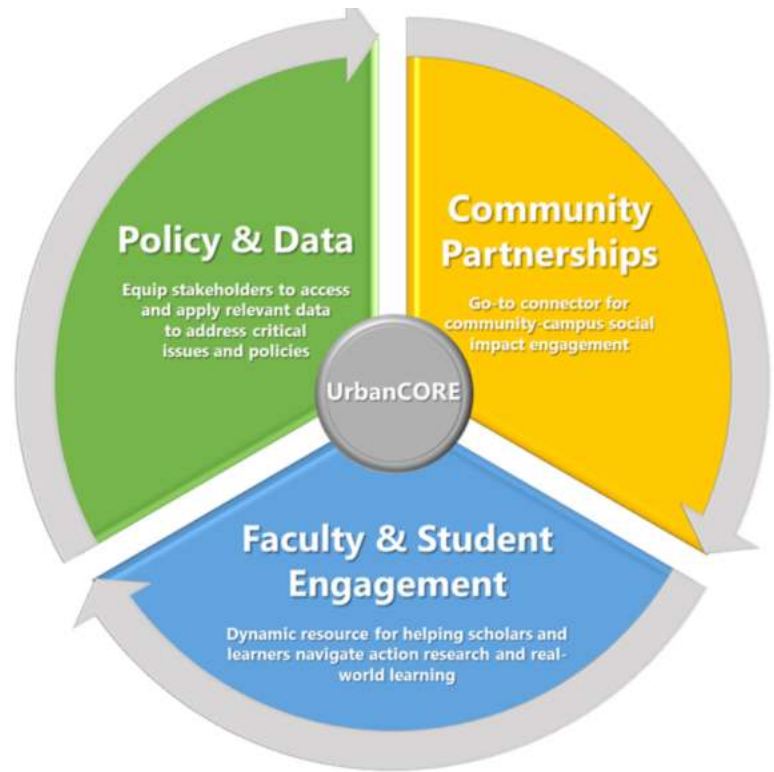
LUNCH/WRAP UP/ GIVE AWAYS

1:00

CLOSING



urbanCORE



Dr. Byron P. White, Associate Provost

urbanCORE is the hub of UNC Charlotte's engaged scholarship ecosystem. CORE is an acronym for Community-Oriented Research and Engagement. Our unit mobilizes, assesses, and advances efforts that connect the University's interdisciplinary, urban research resources to community assets in order to "co-produce transformative solutions to societal issues and challenges."



The Women + Girls Research Alliance (W+GRA) is committed to improving the lives of women and girls in the greater Charlotte metropolitan area by facilitating partnerships among researchers, community leaders and civic investors that produce transformative outcomes.



As an affiliate of UNC Charlotte's urbanCORE, W+GRA leverages its unique connection to the University and the community to implement three strategies that produce innovative solutions to systemic challenges that impede the well-being of women and girls.



First, we **mobilize**.

W+GRA encourages engaged research focused on issues related to the economic, social, and physical well-being of women and girls. We encourage co-production among researchers, community residents, and practitioners. Our competitive *Seed Grant* program supports emerging scholarship from UNC Charlotte faculty that expands and elevates the voices of all women and girls in academic research.

Second, we **equip**.

W+GRA champions partnerships with a growing network of grassroots and established organizations devoted to issues related to women and girls to build their knowledge and organizational capacity. One example is our work with a local organization to provide an evaluation plan focused on diversity, equity, and inclusion.



Third, we **convene**.

The W+GRA hosts gatherings, convenings, and conversations with faculty, local experts, and community scholars to discuss what is happening with women and girls globally, nationally, and locally to devise possible solutions to systemic issues. The W+GRA encourages active, data-driven partnerships that lead to improved outcomes and best practices for women and girls' well-being and empowerment.



A Message from the Executive Director Dr. Michelle Meggs

Welcome to the Women + Girls Research Alliance (W+GRA) Taking Space Without Apology: A Women and Girls Leadership Cafe! We are so excited that you are here for this community conversation.

Over the past year the W+GRA has been unwavering in our commitment to advancing research and initiatives that promote the well-being and empowerment of women and girls. We are dedicated to a multi-faceted approach that includes supporting faculty research, community organizations, non-profits, and engaging with student groups to identify actionable solutions.

To that end, we utilized insights from events such as the 2022 Leadership Cafe to inform our research focus to help us tell the story of women and girls beyond the COVID-19 pandemic. This led us to delve into vital areas such as mental health, economic mobility, and empowerment. Through our collaboration with faculty and researchers we are able to provide a deeper understanding of the challenges and opportunities that women and girls face in these areas. By harnessing the power of research, data, and community we aim to empower women and girls to create a more equitable, inclusive, and sustainable future that amplifies their voices.

Together, with you and our partners, we will actively shape what's next - a future where women and girls thrive, succeed, and contribute fully to the world.

Michelle Meggs

DR. MICHELLE MEGGS
Executive Director

W+GRA

ADVISORY BOARD



MONICA ALLEN, PH.D.

Director of Strategic Planning
and Evaluation
Mecklenburg County



NATALIE BROWN

Senior Director of Corporate
Citizenship
Ally Financial



RALPHINE CALDWELL

Executive Director
LISC Charlotte



KAREN GIPSON

Executive Director
Girls On The Run

W+GRA

ADVISORY BOARD



KELLY FINLEY

Senior Lecturer and
Undergraduate Advisor
Women's Gender Studies
UNC Charlotte



**PATRICIA MASSEY
HOKE**

Executive Director
Women's Impact Fund



CARLENIA IVORY

Community Engagement
Specialist
Charlotte Mecklenburg
Schools



JANAKA BOWMAN-LEWIS, PH.D.

Associate Professor,
Department of English
Director, Women's and Gender Studies
UNC Charlotte

W+GRA

ADVISORY BOARD



DEBORAH MAJEWSKI

Senior Program Officer
The Leon Levine Foundation



APRIL WHITLOCK

Head of Corporate Citizenship
Executive Director
Lending Tree Foundation



ELIZABETH TROTMAN

President & CEO
One Catalyst Consulting



ANGELA WOODS, JD

Chief Operating Officer
Crossnore Communities
for Children

thank you

Thank you for attending 'Taking Space Without Apology: A Women + Girls Leadership Café!'

We greatly appreciate the support of CMS staff, urbanCORE, the staff and volunteers from the UNC Charlotte Urban Institute, W+GRA Advisory Board, Women's Inter-Cultural Exchange, volunteers and all of you!

Support the W+GRA



<https://tinyurl.com/yc7jfpz4>

Community Resources



<https://tinyurl.com/yc7jfpz4>



WOMEN + GIRLS RESEARCH
ALLIANCE



@WGRACharlotte

#LeadershipCafe





UNIVERSITY OF NORTH CAROLINA
CHARLOTTE

Shape What's Next

charlotte.edu